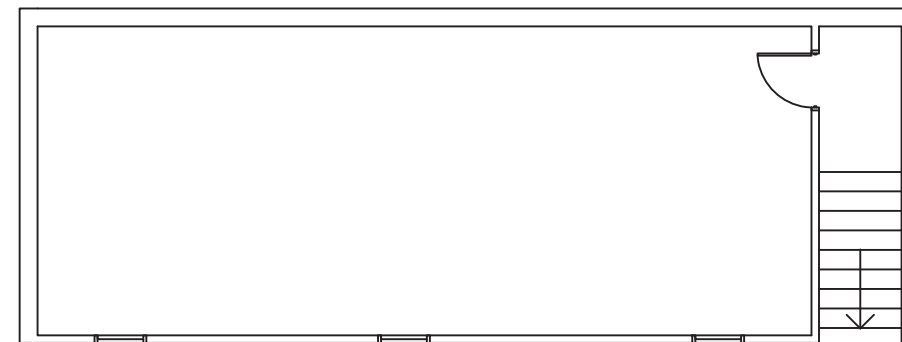
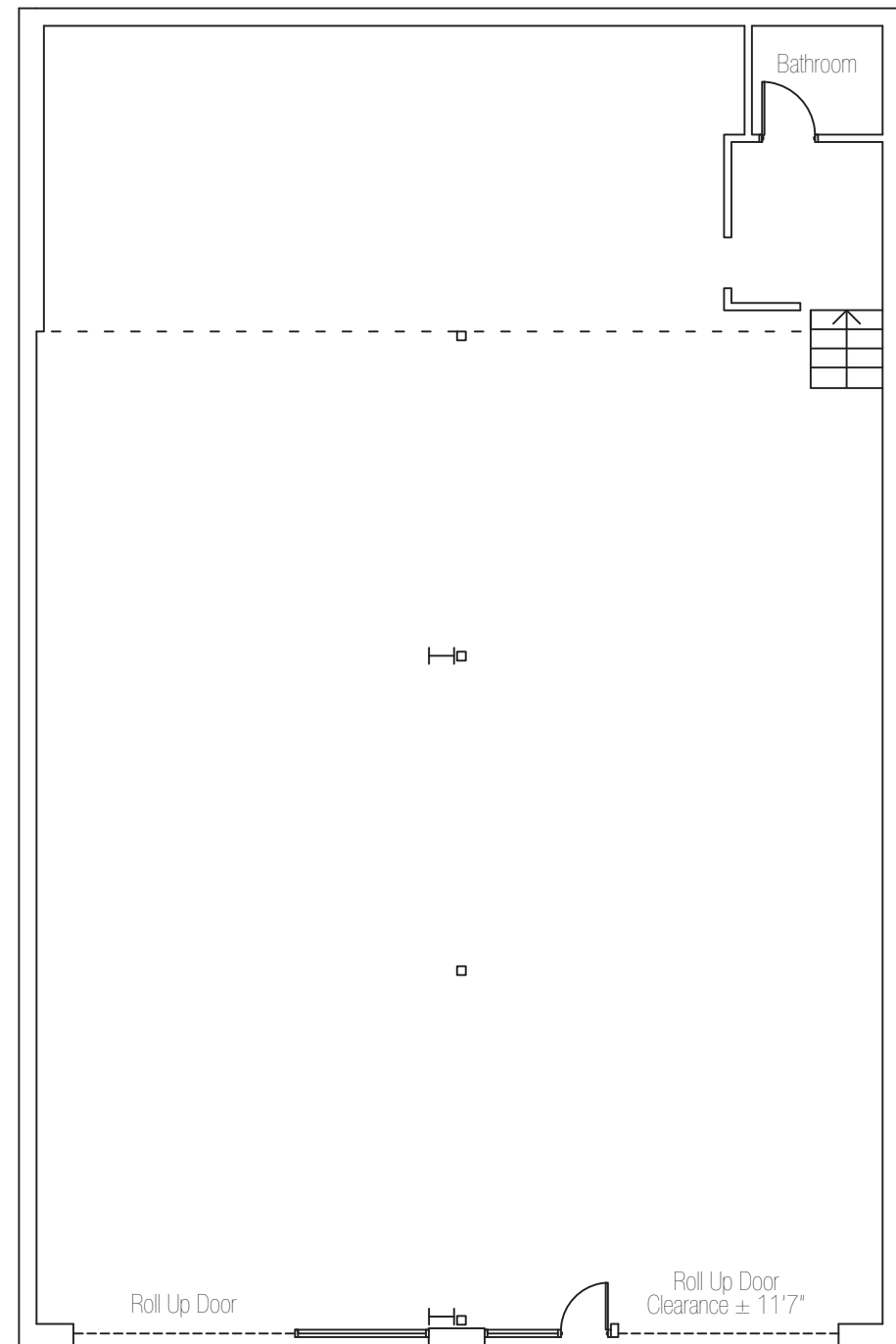


42 12th St
San Francisco, California

For Lease
415.637.2163
Jay Pon
Mark McNee

SFrealstate.com

Not To Scale
For Informational Purposes Only



Mezzanine
Ceiling Height \pm 7'8-1/2"

Ground Floor
Ceiling Height \pm 17'6"

CA DRE Licenses:
01203843 Jay
01464307 Mark
02006673 Company