

Jay Pon

415.409.8858
jpon@jps.net

Mark McNee

415.637.2163
mark@mcnee.net



For Lease

SOMA

Commercial Space

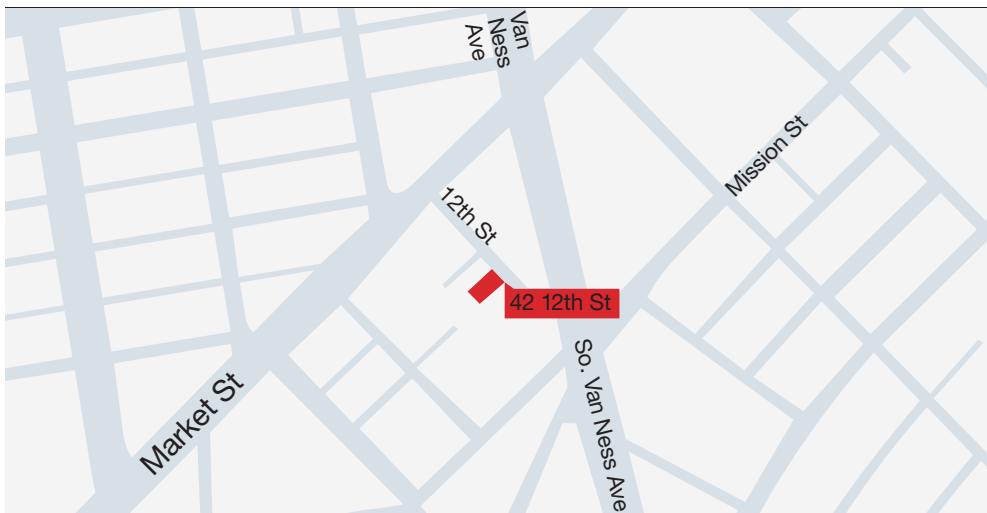
42 12th Street, San Francisco, CA 

Size: ± 3,794 ft² plus ± 870 ft² mezzanine

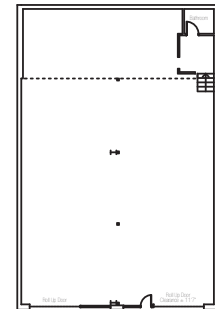
- Main area ceiling height is ±17'6"
- Roll up door height is ±11'7"
- Mezzanine ceiling height is ±7'8"
- Zoning is NCT-3

Term: 3+ years

Asking Price: \$7,500 per month, NNN



Click For PDF



The information contained herein has been obtained from sources we deem reliable but is not guaranteed. Prospective tenants are advised to independently verify accuracy and to review any disclosure information on file with this office. This property statement is dated December 1, 2023 and replaces any previously dated or undated version. Information on this statement changes periodically; Prospective tenants are advised to contact our office to ensure they have the most current property statement. *Data from San Francisco Planning Department; Square footage references should be verified by tenant using qualified professionals. To be removed from our distribution list call 415.637.2163. CA DRE License Information: SFrealstate.com #02006673; Jay Pon #01203843; Mark McNee #01464307.