



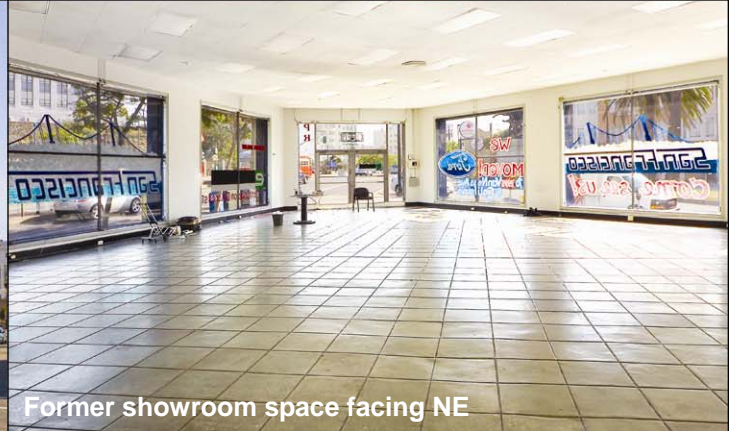
Facing SW



Parking/warehouse area facing SE



Facing NW



Former showroom space facing NE

## For Lease

Mission Dolores  
Short Term Availability

Jay Pon  
415.701.2636  
[jpon@jps.net](mailto:jpon@jps.net)

Mark McNee  
415.701.2637  
[mark@mcnee.us](mailto:mark@mcnee.us)

*Facsimile:* 415.701.2686

### 2001 Market St (At Dolores St)

**Available:** Approximately 42,460 square feet, divisible

**Zoning:** NCT-3 (Neighborhood Commercial Transit)

- Large open ground floor showroom area with second floor conference room; Kitchenette
- Two levels of parking or warehouse with separate entrances
- Unparalleled signage opportunities
- Tremendous frontage along Market St and Dolores St
- Abundant natural light in nearly all areas
- Former occupant was S&C Ford automotive dealership

**Term:** One year, month-to-month thereafter

**Price:** \$25,000 per month, NNN

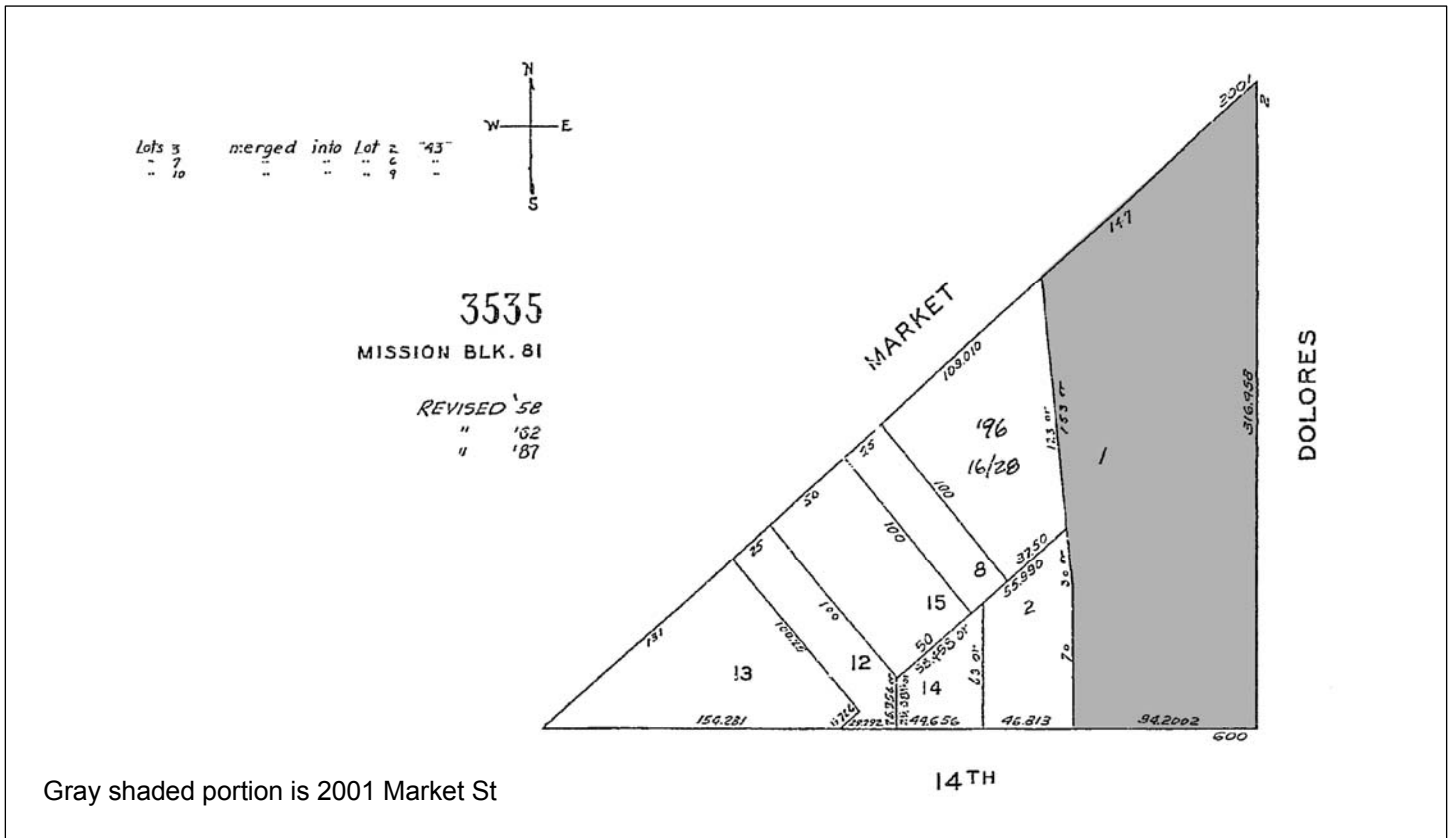
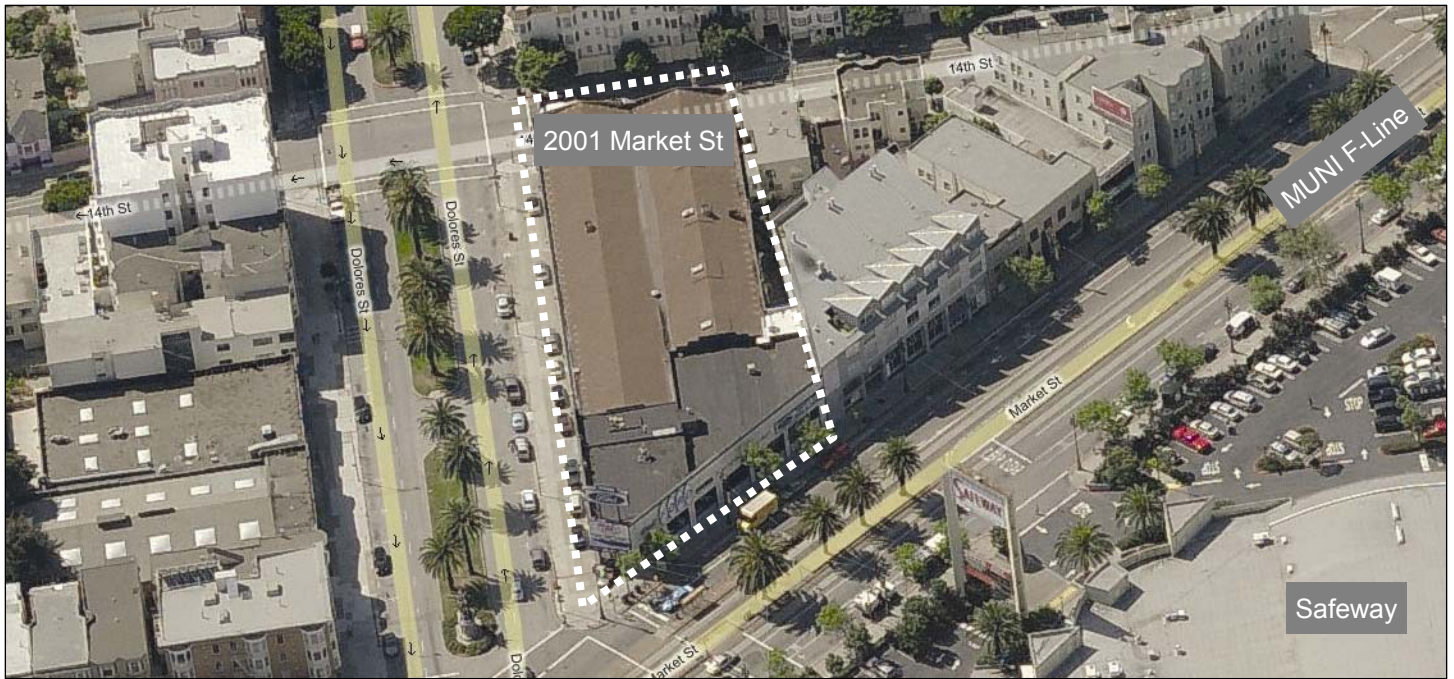
Levi's Plaza-Civic Center



**PARAGON**  
REAL ESTATE GROUP

[www.SFrealstate.com](http://www.SFrealstate.com)

The information contained herein has been obtained from sources we deem reliable but is not guaranteed. Prospective purchasers/tenants are advised to independently verify accuracy and to review any disclosure information on file with this office. This property statement is dated 6/20/2008 and replaces any previously dated or undated version. Information on this statement changes periodically; Prospective purchasers/tenants are advised to contact our office to ensure they have the most current property statement. Square footage should be verified by purchaser/tenant using qualified professionals. To be removed from our distribution list call 415-701-2636.



Levi's Plaza-Civic Center



**PARAGON**  
REAL ESTATE GROUP

www.SFrealstate.com

The information contained herein has been obtained from sources we deem reliable but is not guaranteed. Prospective purchasers/tenants are advised to independently verify accuracy and to review any disclosure information on file with this office. This property statement is dated 6/20/2008 and replaces any previously dated or undated version. Information on this statement changes periodically; Prospective purchasers/tenants are advised to contact our office to ensure they have the most current property statement. Square footage should be verified by purchaser/tenant using qualified professionals. To be removed from our distribution list call 415-701-2636.