

Cooperating Broker Fee:
6% of gross rents for years 1-5



For Lease

Inner Richmond

Second Floor Office Suites

Jay Pon

415.701.2636

jpon@jps.net

Mark McNee

415.701.2637

mark@mcnee.us

Facsimile: 415.701.2686

3900 Geary Blvd (NW Corner of 3rd Avenue)

Available: **Suite 201:** Approximately 1,041 square feet*
Corner suite with two private offices

Suite 202: Approximately 416 square feet*
Open floor plan

Suite 303: Approximately 363 square feet*

- High ceilings; Abundant natural light
- Easy access to public transportation
- Building constructed in 1988
- Suites 201 and 202 can be combined to create 1,457 square feet*
- Owner pays for electricity, water and garbage services

Term: Negotiable **Per Owner*

Price: \$2.50 per square foot per month

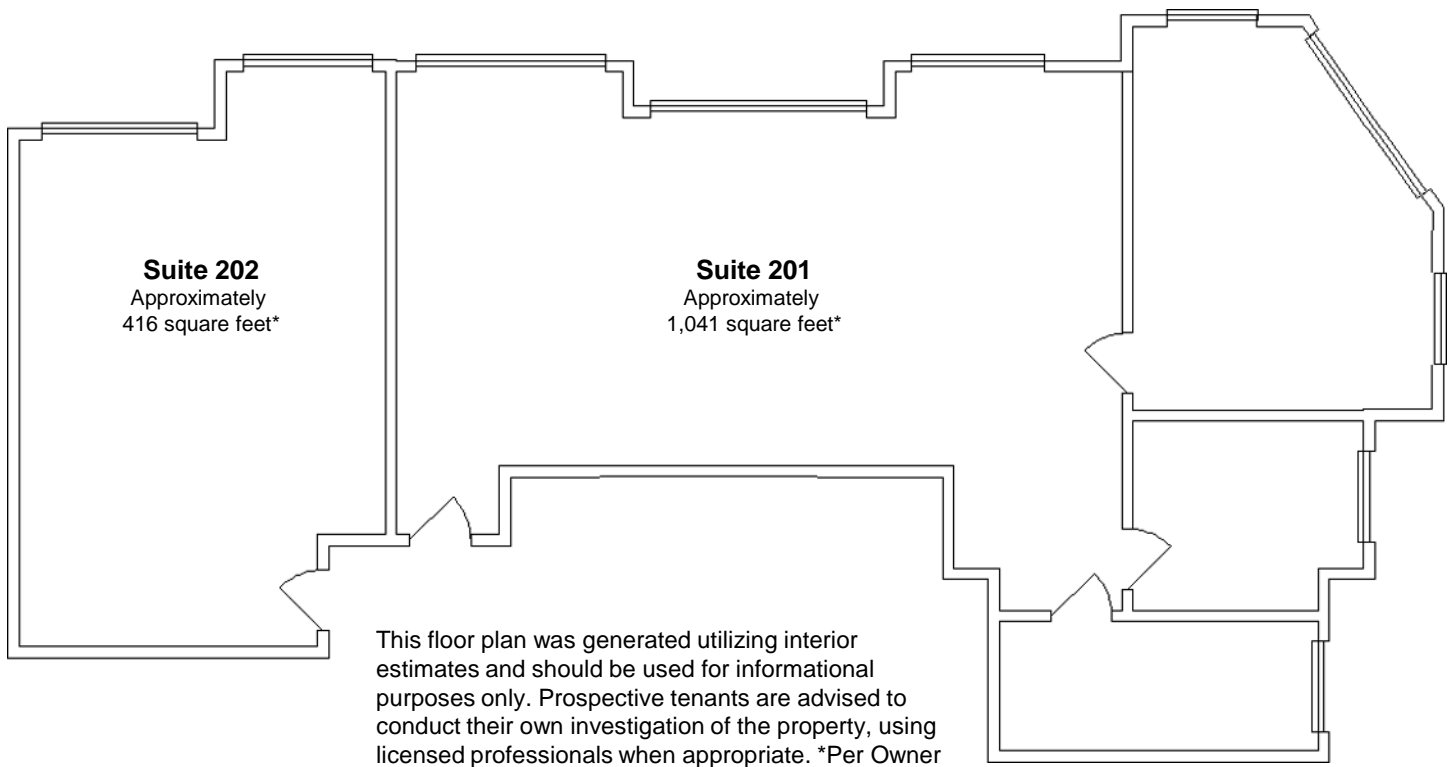
Levi's Plaza - Van Ness Corridor



PARAGON
REAL ESTATE GROUP

www.SFrealstate.com

The information contained herein has been obtained from sources we deem reliable but is not guaranteed. Prospective purchasers and/or tenants are advised to independently verify accuracy and to review any disclosure information on file with this office. This property statement is dated April 19, 2010 and replaces any previously dated or undated version. Information on this statement changes periodically; Prospective purchasers and/or tenants are advised to contact our office to ensure they have the most current property statement. Square footage should be verified by purchaser and/or tenant using qualified professionals. To be removed from our distribution list call 415.701.2636. Paragon Real Estate Group DRE# 01443761; Jay Pon DRE# 01203843; Mark McNee DRE# 01464307.



Levi's Plaza - Van Ness Corridor



PARAGON
REAL ESTATE GROUP

www.SFrealstate.com

The information contained herein has been obtained from sources we deem reliable but is not guaranteed. Prospective purchasers and/or tenants are advised to independently verify accuracy and to review any disclosure information on file with this office. This property statement is dated April 19, 2010 and replaces any previously dated or undated version. Information on this statement changes periodically; Prospective purchasers and/or tenants are advised to contact our office to ensure they have the most current property statement. Square footage should be verified by purchaser and/or tenant using qualified professionals. To be removed from our distribution list call 415.701.2636. Paragon Real Estate Group DRE# 01443761; Jay Pon DRE# 01203843; Mark McNee DRE# 01464307.